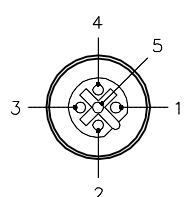

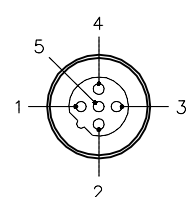

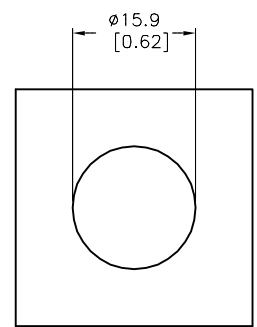
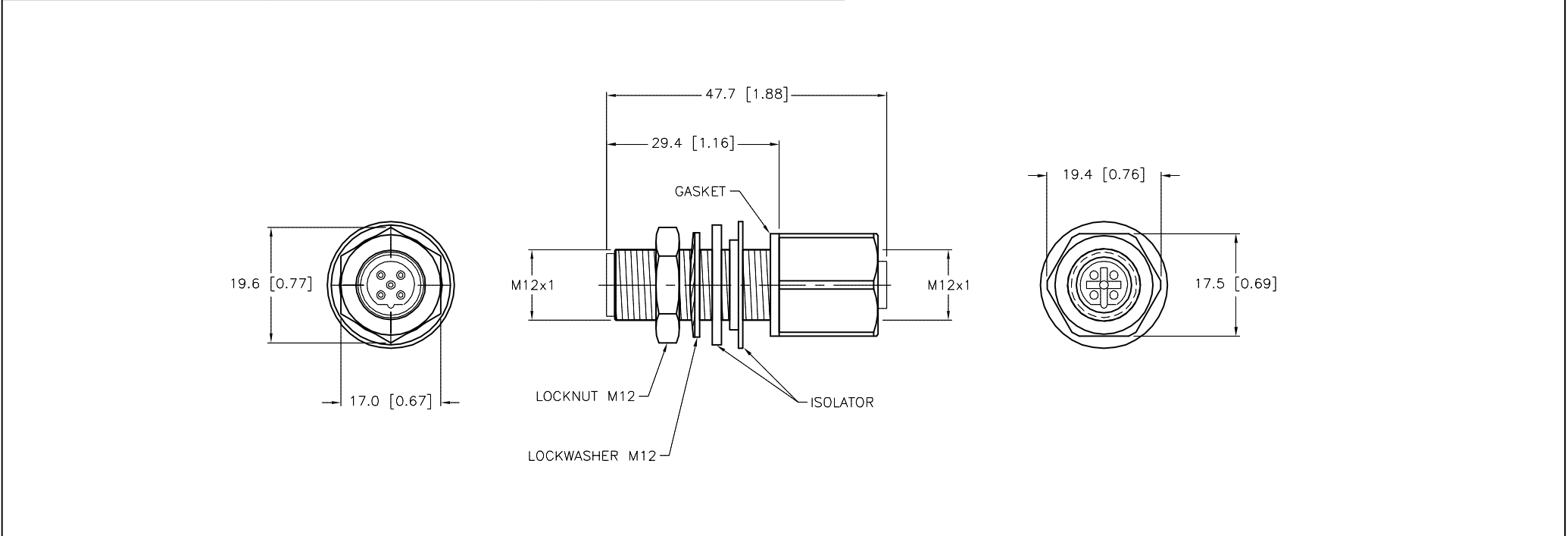
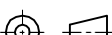



FEMALE END VIEW	MALE END VIEW	TYPICAL PANEL CUTOUT	SPECIFICATIONS																					
 <p>1 = BROWN 2 = WHITE 3 = BLUE 4 = BLACK 5 = GREY</p> 	 <p>1 = BROWN 2 = WHITE 3 = BLUE 4 = BLACK 5 = GREY</p> 		<table><tr><td>CONTACT CARRIER MATERIAL</td><td>NYLON OR TPU</td></tr><tr><td>CONTACT MATERIAL/PLATING</td><td>BRASS/GOLD</td></tr><tr><td>HOUSING MATERIAL/FINISH</td><td>STAINLESS STEEL/PASSIVATED</td></tr><tr><td>RATED CURRENT [A]</td><td>4.0 A</td></tr><tr><td>RATED VOLTAGE [V]</td><td>150 V</td></tr><tr><td>NUMBER OF CONDUCTORS [AWG]</td><td>5x22 AWG</td></tr><tr><td>TEMPERATURE RANGE</td><td>-40°C to +105°C (-40°F to +221°F)</td></tr><tr><td>PROTECTION CLASS</td><td>MEETS NEMA 1,3,4,6P AND IEC IP67</td></tr><tr><td>GASKET MATERIAL</td><td>NITRILE</td></tr><tr><td>ISOLATOR MATERIAL</td><td>NYLON</td></tr></table>	CONTACT CARRIER MATERIAL	NYLON OR TPU	CONTACT MATERIAL/PLATING	BRASS/GOLD	HOUSING MATERIAL/FINISH	STAINLESS STEEL/PASSIVATED	RATED CURRENT [A]	4.0 A	RATED VOLTAGE [V]	150 V	NUMBER OF CONDUCTORS [AWG]	5x22 AWG	TEMPERATURE RANGE	-40°C to +105°C (-40°F to +221°F)	PROTECTION CLASS	MEETS NEMA 1,3,4,6P AND IEC IP67	GASKET MATERIAL	NITRILE	ISOLATOR MATERIAL	NYLON	
CONTACT CARRIER MATERIAL	NYLON OR TPU																							
CONTACT MATERIAL/PLATING	BRASS/GOLD																							
HOUSING MATERIAL/FINISH	STAINLESS STEEL/PASSIVATED																							
RATED CURRENT [A]	4.0 A																							
RATED VOLTAGE [V]	150 V																							
NUMBER OF CONDUCTORS [AWG]	5x22 AWG																							
TEMPERATURE RANGE	-40°C to +105°C (-40°F to +221°F)																							
PROTECTION CLASS	MEETS NEMA 1,3,4,6P AND IEC IP67																							
GASKET MATERIAL	NITRILE																							
ISOLATOR MATERIAL	NYLON																							



SOURCE DRAWING - FOR REFERENCE ONLY

					RELATED DOCUMENTS		3RD ANGLE PROJECTION		THIS DRAWING IS CONFIDENTIAL AND THE PROPERTY OF TURCK INC. USE OF THIS DOCUMENT WITHOUT WRITTEN PERMISSION IS PROHIBITED.		3000 CAMPUS DRIVE MINNEAPOLIS, MN 55441 1-800-544-7769 (763) 553-7300 (763) 553-0708 fax www.turck.us			
					1.									
					2.									
					3.									
					4.									
					MATERIAL		ALL DIMENSIONS DISPLAYED ON THIS DRAWING ARE FOR REFERENCE ONLY		DRFT RDS		DATE 04/04/14		DESCRIPTION FKWV FSWV 4.5/M12	
									APVD A.A.		SCALE 1 = 1.0			
										FINISH		CONTACT TURCK FOR MORE INFORMATION		UNIT OF MEASUREMENT MILLIMETER [INCH]
							U2-22928		A					
A					DRAWING RELEASE		RDS		04/14/14					
REV					DESCRIPTION		BY		DATE		ECO NO.			